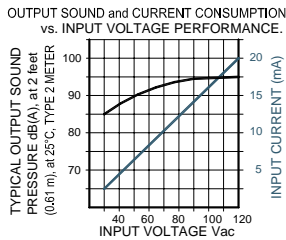


MW-V09-201-Q

**Made in
USA**



- Durable Stainless Steel 304 Diaphragm
- Epoxy Encapsulated Electronics
- UL Approved
- NEMA 4X Certified with Optional Gasket
- Reliable Piezoelectric Technology



The MW-V09-201-Q is a warble tone alarm with a typical loudness level of 95 dB (A). It can be operated over a voltage range of 30-120VAC and warbles at a rate of 15 times per second.

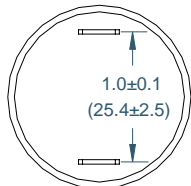
SPECIFICATIONS

Operating Mode:	Medium Loud Warble Tone
Operating Voltage:	30-120 Vac
Nominal Operating Voltage:	110 Vac
Operating Frequency:	High Frequency Peak: 2900±250 Hz. Low Frequency Peak: 2200±250 Hz. 15±25% Cycles per second
Typical Operating Current:	5 mA at 30 Vac 20 mA at 120 Vac
Typical Sound Pressure:	With volume control fully open: 85±5 dB(A), at 30 Vac, at 24 inches (61 cm), at 25°C 95±5 dB(A), at 120 Vac, at 24 inches (61 cm), at 25°C.
Termination:	Quick Connect Blades, 0.25 (6.3) Width, 0.032 (0.8) Thickness
Termination Strength:	Pull test with a maximum of 22 pounds (10 kg) load
Operating Temperature:	-20°C to +65°C.
Storage Temperature:	-40°C to +85°C.
Surge Voltage:	20% over maximum rated voltage for less than 5 minutes.
Part Recognized By:	Underwriters Laboratory
Construction Materials:	Case- Plastic "NORYL® N-190", Flame Retardant UL 94-VO, Black Internal Circuit- Audio-oscillator and piezoelectric driver Potting- 2 parts epoxy resin or silicone, black Diaphragm- Stainless Steel 304 Gasket (Sold Separately)- 0.062" Thick, 60 Durometer Neoprene
Environmental Durability:	Salt Spray- Withstand exposure to salt spray per ASTM B117 for a period of 300 hours with no decrease in sound output Humidity- 95% relative humidity at +40°C continuously for 100 hours. Vibration- Withstands vibration between 0 and 55 Hz. on all axes.
Life Expectancy:	10 years under normal operating conditions.
Warranty:	For a period of two years from the date of manufacture under normal operating conditions.

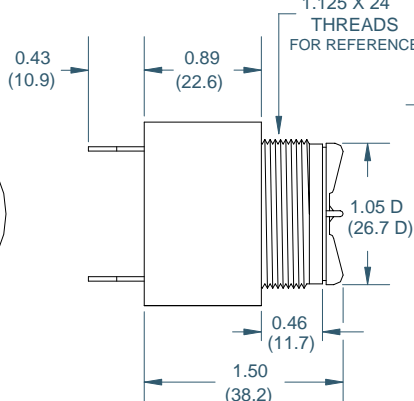
RoHS Also available RoHS Compliant — Add "R" to end of part number.

DIMENSIONS

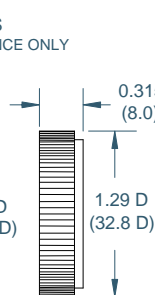
REAR VIEW



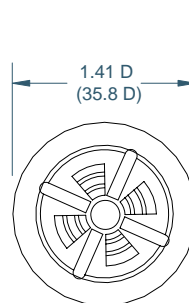
SIDE VIEW



RING

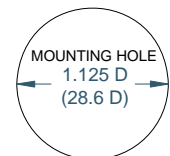


FRONT VIEW



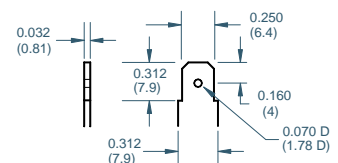
DIMENSIONS ARE IN: INCHES (mm)
TOLERANCES ARE: ±0.03 (±0.76)
UNLESS OTHERWISE SPECIFIED.

PANEL MOUNTING



FITS PANELS UP-TO 0.25 (6.3) THICK

"Q" TERMINALS



Floyd Bell Inc
An ISO 9001:2000 Registered Company

720 Dearborn Park Lane • Columbus, OH 43085
Tel: 888-FLOYD-BELL • Fax: 614/291-0823
www.floydbell.com

Revision: 2.07